

# TEXTILE FRAMES



COSIGN

# TEXTILE FRAMES



## COSIGN TEXTILE FRAMES: INFINITE POSSIBILITIES

Textile frames are the solution for the fast and easy exchange of printed textile fabrics. The image is printed on a textile fabric and a silicon beading is added around it. This is simply pressed into the profile that ensures that the slightly stretchable fabric can be stretched perfectly.

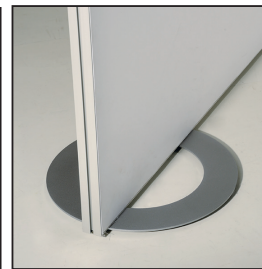
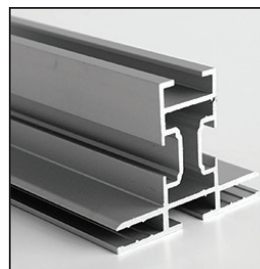
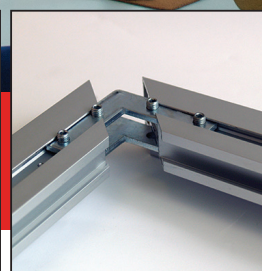
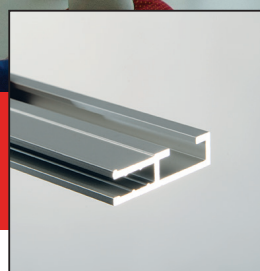
The convenience of use of our aluminium profiles in combination with innovative accessories and high-quality textile fabrics that can be printed up to 3 m wide seamlessly means that our textile frames are perfectly suitable for dressing and setting up shops, showrooms, offices and fair stands. Regardless of whether you want a wall frame or a standalone or hanging frame, you will find the right solution with our single- and double-sided textile profiles.

Cosign also offers LED profiles in which you can integrate High Power LED modules that will ensure that the fabric is lit up uniformly and the image is done even better justice. You can also include a noise-dampening material behind the printed fabric to improve the acoustics of a room or to create partitions.

You will not just find the profiles and accessories at Cosign, you can also order the full custom-made product including the printed fabric.







## LES CADRES TEXTILE DE COSIGN : DES POSSIBILITÉS INFINIES


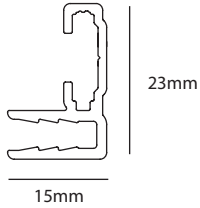

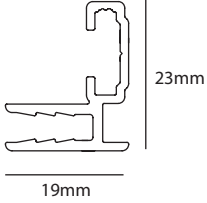

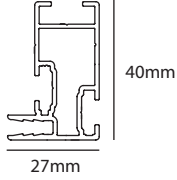
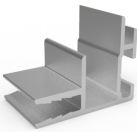
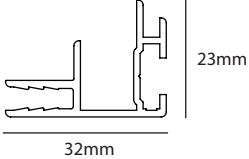
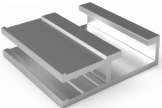
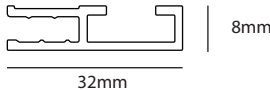
Les cadres tissu tendu sont la solution idéale pour pouvoir remplacer rapidement et facilement les tissus imprimés. L'image est imprimée sur un tissu, et tout le périmètre de ce dernier est muni d'une bande en silicone. La bande s'insère facilement dans le profilé de façon à tendre parfaitement le tissu légèrement extensible.

La facilité avec laquelle nos profilés en aluminium peuvent être combinés à des accessoires innovants et à des tissus de haute qualité, susceptibles d'être imprimés sans jointure sur une largeur atteignant 3 m, fait de nos cadres tissu tendu la solution idéale pour l'habillement et l'aménagement de magasins, showrooms, bureaux et stands de foires. Que vous recherchiez une enseigne à fixer au mur, à suspendre ou à poser librement, vous trouverez certainement une solution adaptée dans notre collection de profilés pour tissu tendu simple face ou double face.

Cosign propose également des profilés LED dans lesquels peuvent s'intégrer des modules LED High Power de façon à éclairer uniformément le tissu et à mettre encore plus en valeur l'illustration. Il est également possible d'ajouter un matériau insonorisant derrière le tissu afin d'améliorer l'acoustique d'un local ou de créer des cloisons.

# PROFILES / PROFILÉS

## SINGLE-SIDED TEXTILE FRAME PROFILES / PROFILÉS POUR CADRES TEXTILE SIMPLE FACE

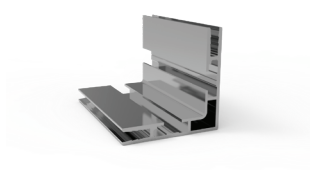
	product code	profile / profilé			
	<b>TEXSSLD15</b>	15x23mm (light duty)	6,1mtr		
	<b>TEXSSLD19</b>	19x23mm (light duty)	6,1mtr		
	<b>TEXSSHD27</b>	27x40mm (heavy duty)	6,1mtr		
	<b>TEXLLS32</b>	32x23mm (Led Light Sheet)	6,1mtr		
	<b>TEXNICHE</b>	32x8mm (niche)	3mtr		

## DOUBLE-SIDED TEXTILE FRAME PROFILES / PROFILÉS POUR CADRES TEXTILE DOUBLE FACE

	product code	profile / profilé			
	<b>TEXDSHD44</b>	44x40mm (heavy duty)	6,1mtr		
	<b>TEXDSL45</b>	45x15mm	3mtr		



# LED PROFILES / PROFILÉS À ÉCLAIRAGE LED



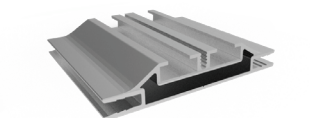
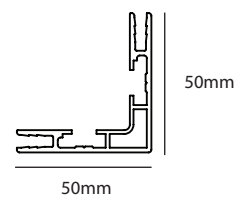
product code

TEXLED50

profile / profilé

50x50mm

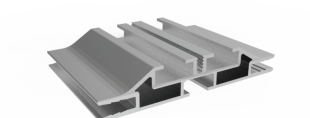
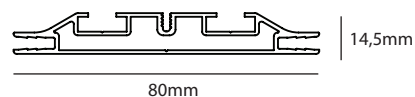
6,1mtr



TEXLED80

80x14,5mm

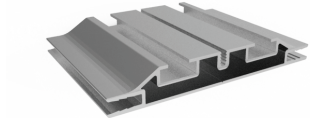
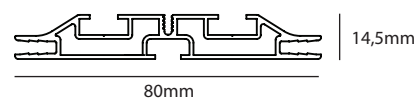
6,1mtr



TEXLED80T

80x14,5mm

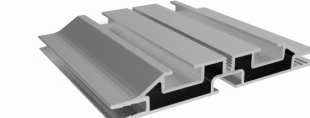
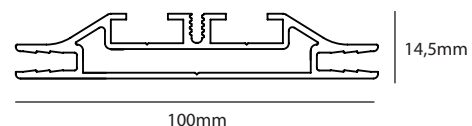
6,1mtr



TEXLED100

100x14,5mm

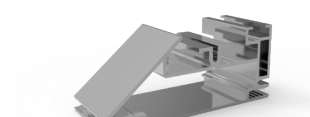
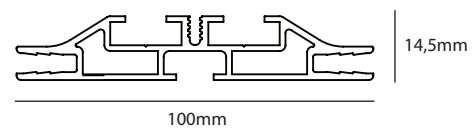
6,1mtr



TEXLED100T

100x14,5mm

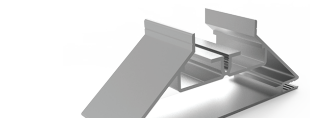
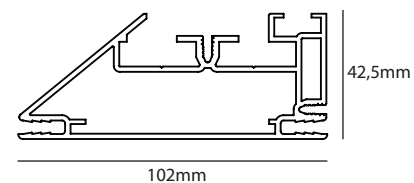
6,1mtr



TEXLEDSS-BL

102x42,5mm

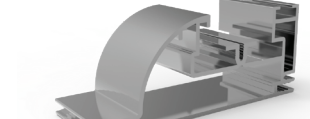
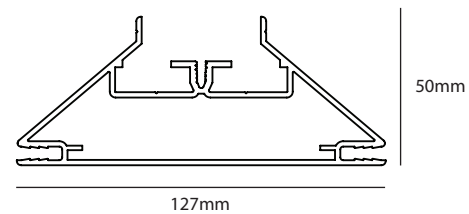
6,1mtr



TEXLEDSS-BL

127x50mm

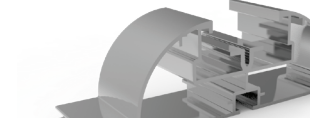
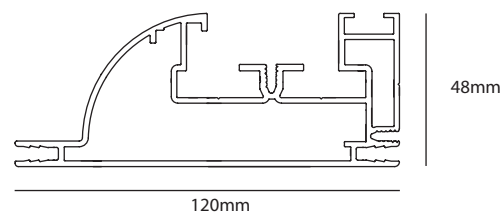
6,1mtr



TEXLEDSS-EL

120x48mm

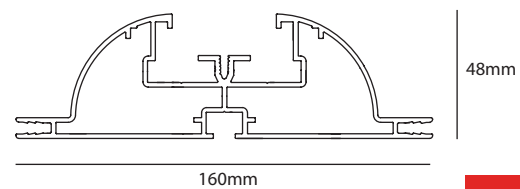
6,1mtr



TEXLEDSS-EL

160x48mm

6,1mtr



# PROFILES & ACCESSORIES / PROFILÉS & ACCESSOIRES

## CORNER CONNECTORS CONNECTEURS D'ANGLE

product code      description



**TEXCORNS**

for profile / pour profilé  
TEXSSH27, TEXNICHE, TEXDSDL45



**TEXCORNL**

for profile / pour profilé  
TEXSSLD15, TEXSSLD19, TEXSSH27,  
TEXDSD44, TEXLLS32



**TEXLEDCORN1**

for profile / pour profilé  
TEXLEDSS(BL/EL), TEXLEDDS(BL/EL)



**TEXLEDCORN2**

for profile/ pour profilé  
TEXLED80, TEXLED80T  
TEXLED100, TEXLED100T  
TEXLED50



**CONNECTOR1**

for profile/ pour profilé  
TEXSSLD15, TEXSSLD19, TEXSSH27,  
TEXLLS32, TEXDSD44, TEXNICHE



**CONNECTOR2**

for profile/ pour profilé  
TEXSSH27, TEXDSD44



**CONNECTOR3**

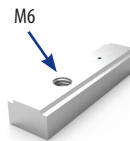
for profile/ pour profilé  
TEXLEDSS (BL/EL), TEXLEDDS (BL/EL)



**CONNECTOR4**

for profile/ pour profilé  
TEXLED50  
TEXLED80, TEXLED80T  
TEXLED100, TEXLED100T

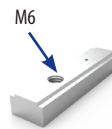
## SUSPENSION CLIP CLIP SUSPENSION



product code      description

**TEXHANG1**

metal suspension clip for 1.5mm cable/  
clip suspension metal pour cable  
TEXDSD44, TEXLEDDS-EL



**TEXHANG2**

metal suspension clip for M6 rod/threaded  
bar/ clip suspension metal  
TEXLED80T / TEXLED100T

## MOUNTING BRACKET SUPPORT DE MONTAGE EN DRAPEAU

product code      description



**TEXBRACKET1**

Wall mounting bracket for  
TEXLEDSS(BL/EL) , TEXSSH27

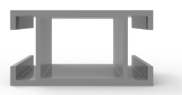


**TEXBRACKET2**

Wall mounting bracket for  
TEXLED80, TEXLED80T  
TEXLED100, TEXLED100T

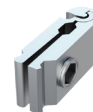
## H-SUPPORT PROFILE PROFILÉ DE RENFORT-H

product code      profile / profilé



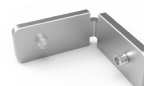
**TEX-H**

36x19mm      3mtr



**TEXCLAMP**

for profile / pour profilé  
TEX-H



**TEXCORNH**

connector for profile/  
connecteur pour profilé  
TEXLEDSS (BL/EL) + TEX-H  
TEXLEDDS (BL/EL) + TEX-H

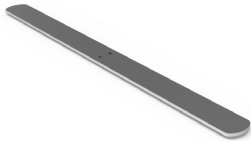
# PROFILES & ACCESSORIES / PROFILÉS & ACCESSOIRES

## STANDING KIT KIT DEBOUT

product code    description



**TEXFOOT40**    foot / pied 400mm

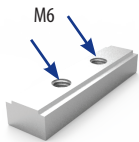


**TEXFOOT60**    foot / pied 600mm

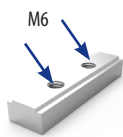


**TEXFEETSIDE**    side support / support latéral

## MOUNTING CLIP CLIP DE MONTAGE



product code    description  
**TEXMOUNT1**    metal clip for M6 rod/threaded bar/  
clip metal  
TEXDSD44 / TEXLEDDS-EL



**TEXMOUNT2**    metal clip for M6 rod/threaded bar/  
clip metal  
TEXLED80T / TEXLED100T

## FLOOR PLATES PIEDS



**TEXCIRCLE**    circle / circle ø 450 x 6mm



**TEXHOOP**    hoop / cerceau ø 450 x 6mm



**TEXBASE**    baseball / base-ball 450 x 300 x 6mm



**TEXFILLET**    fillet / balafre 500 x 180 x 6mm

STANDING KIT / KIT DEBOUT	PROFILE / PROFILÉ	FEET / PIEDS			CONNECTORS / CONNECTEURS	
		TEXFOOT40	TEXFOOT60	TEXFEETSIDE	TEXMOUNT1	TEXMOUNT2
TEXKIT40-1	TEXDSD44 / TEXLEDDS-EL	V			V	
TEXKIT40-1S	TEXDSD44 / TEXLEDDS-EL	V		V	V	
TEXKIT60-1	TEXDSD44 / TEXLEDDS-EL		V		V	
TEXKIT60-1S	TEXDSD44 / TEXLEDDS-EL		V	V	V	
TEXKIT40-2	TEXLED80T / TEXLED100T	V				V
TEXKIT40-2S	TEXLED80T / TEXLED100T	V		V		V
TEXKIT60-2	TEXLED80T / TEXLED100T		V			V
TEXKIT60-2S	TEXLED80T / TEXLED100T		V	V		V

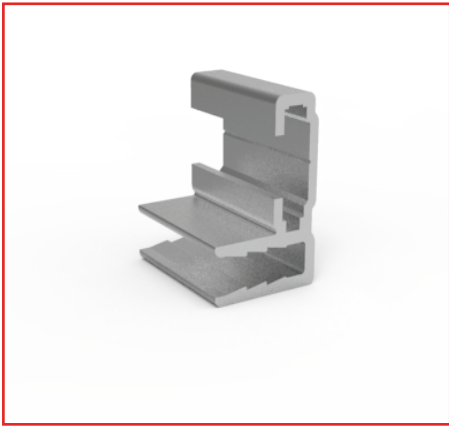
Note:

v = Accessories and screws are included in the kit. / Other textile profiles without track can be used as a freestanding kit while using drill holes.

Remarque:

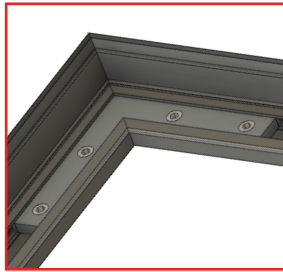
v = Les accessoires et les vis sont inclus dans le kit. / D'autres profilés de textile sans rainure peuvent être utilisés comme kit autoportant tout en utilisant des trous de forage.



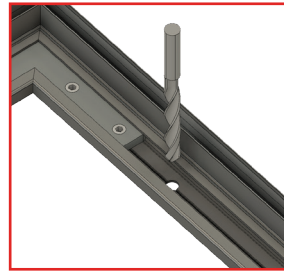


## TEXSSLD15/19

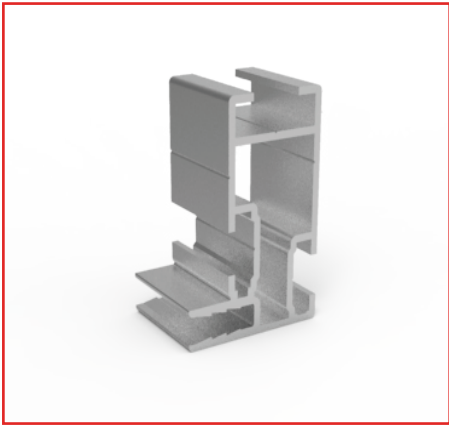
Light duty Single Sided Textile Frame  
15 and 19mm



**CORNERS**  
Connect with **TEXCORNL**



**WALL MOUNTING**  
Drill hole and fix with any screw

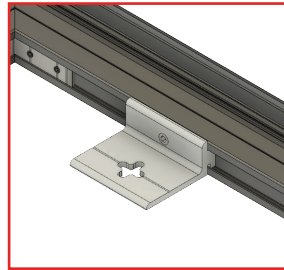


## TEXSSLD27

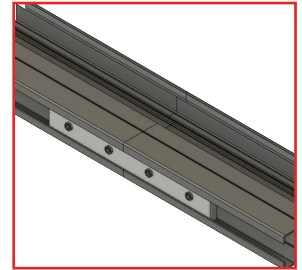
Heavy duty Single Sided Textile Frame  
27mm



**CORNERS**  
Connect with **TEXCORN**



**WALL MOUNTING**  
With use of **TEXBRACKET1** and fix with any screw

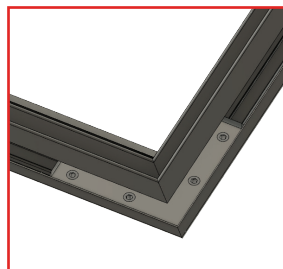


**EXTEND**  
Connect with **CONNECTOR2**

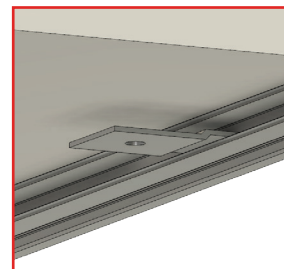


## TEXLLS32

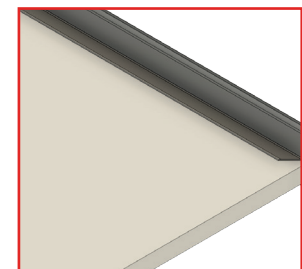
Single Sided Textile Frame for Led Light Sheet  
32mm



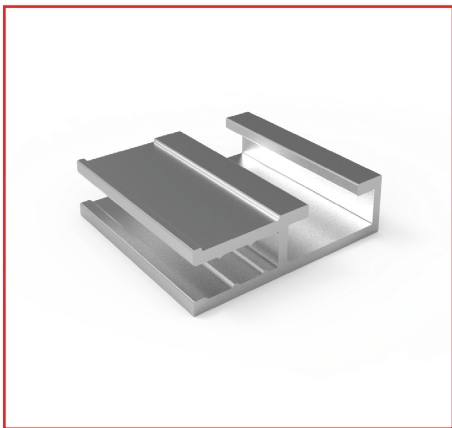
**CORNERS**  
Connect with **TEXCORNL**



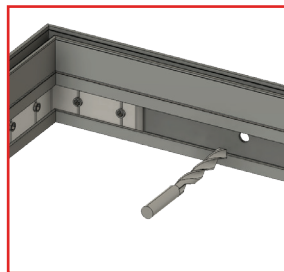
**WALL MOUNTING**  
With use of your own custom connection



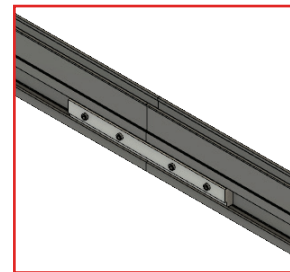
**LIGHTING**  
Use Led Light Sheet



**CORNERS**  
Connect with TEXCORNs



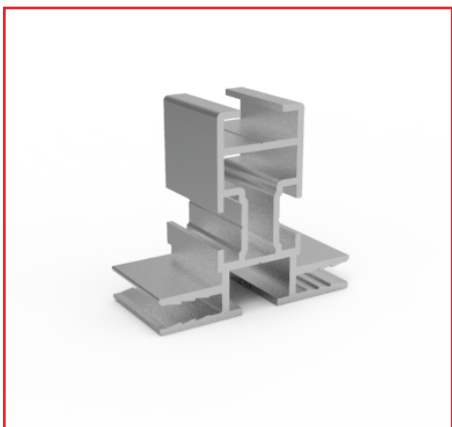
**WALL MOUNTING**  
Drill hole and fix with any screw



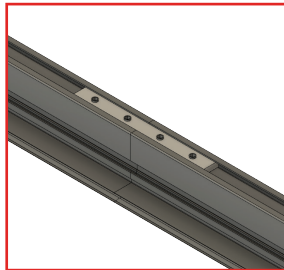
**EXTEND**  
Connect with CONNECTOR2

## TEXNICHE

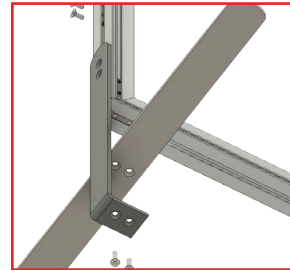
Single Sided Textile Frame for use in niche  
8mm



**CORNERS**  
Connect with TEXCORNs (use on each side)



**EXTEND**  
Connect with CONNECTOR2



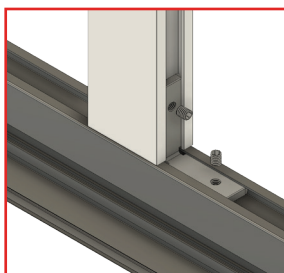
**STANDING KIT**  
TEXFOOT40/60 +  
TEXFEETSIDE +  
TEXMOUNT1

## TEXDSD44

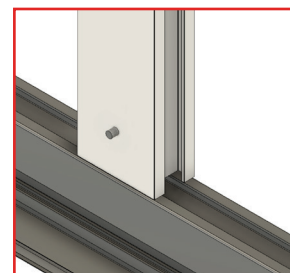
Double Sided Textile Frame  
44mm



**SUSPENSION**  
TEXHANG1 with cable or  
TEXMOUNT1 with M6 rod for very  
large frames



**SUPPORT**  
Connect H profile with TEXCORNH

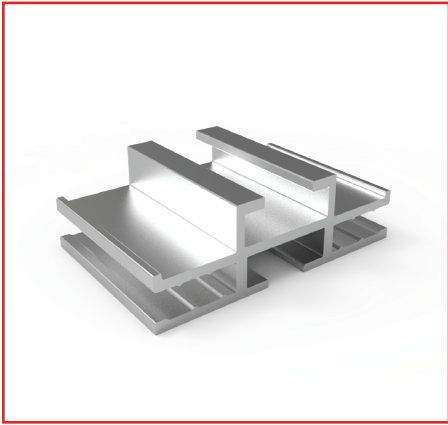


**SUPPORT**  
Connect H profile with TEXCLAMP,  
use hole and screw to tighten

### SUSPENSION SYSTEMS

Check our website or Architectural brochure for more information about our range of suspension kits and systems.

[www.cosign.be](http://www.cosign.be)



**CORNERS**  
Connect with **TEXCORN3**



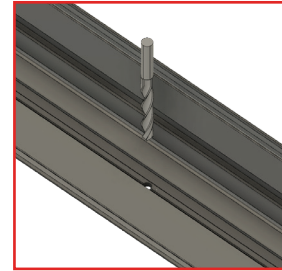
**SUSPENSION**  
Drill hole and use suspension cable with ball

## TEXDSL45

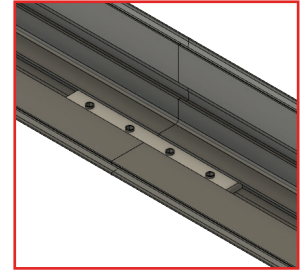
Double Sided Textile Frame  
45mm



**CORNERS**  
Connect with **TEXLEDCORN2**



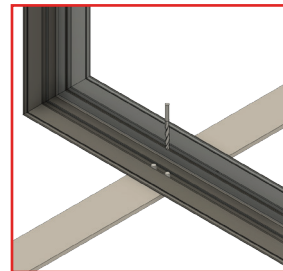
**WALL MOUNTING**  
Drill hole and fix with any screw



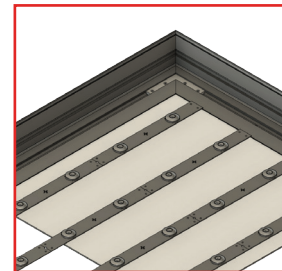
**EXTEND**  
Connect with **CONNECTOR4**

## TEXLED50

Single Sided Textile LED Frame  
50mm



**STANDING KIT**  
Drill holes and fix feet (eg. **TEX-FOOT60**) with screws



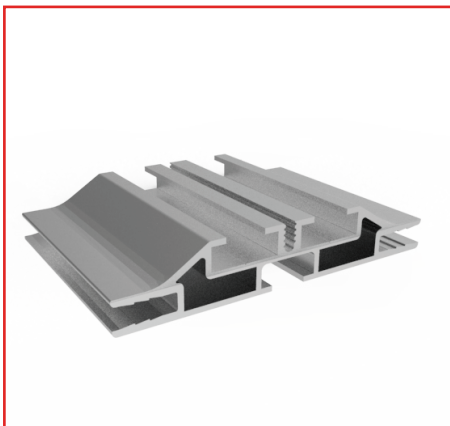
**LIGHTING**  
Use Backlit modules (eg. **Lucoled BLI60, BLI140 or PR20** series) on back plate

### LED MODULE ESTIMATOR

Use the Lucoled LED Module Estimator to choose for the correct light modules and placement for your lightbox, both backlit and edgelit versions.

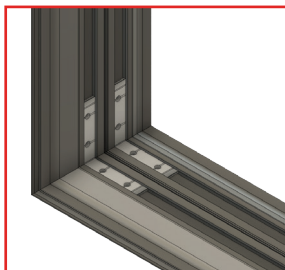
[www.lucoled.com](http://www.lucoled.com)



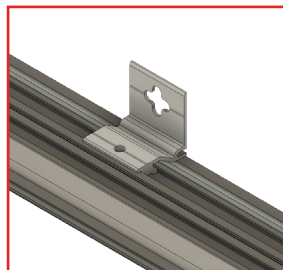


## TEXLED80+80T TEXLED100+100T

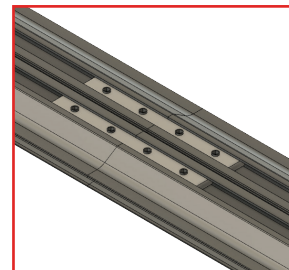
Double Sided Textile LED Frame  
80mm  
100mm



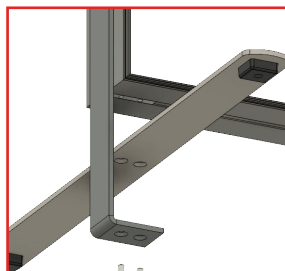
**CORNERS**  
Connect with TEXLEDCORN2  
(use on each side)



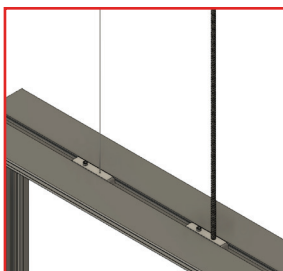
**WALL MOUNTING**  
Use TEXBRACKET2 and fix with  
any screw



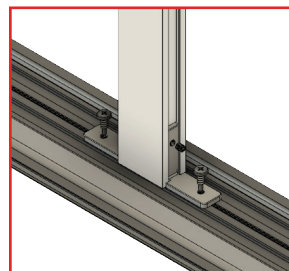
**EXTEND**  
Connect with CONNECTOR4  
(use on each side)



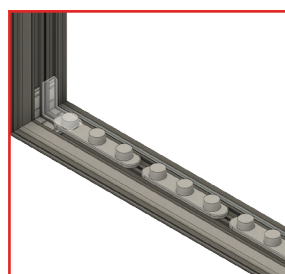
**STANDING KIT**  
TEXKIT40-2 / 2S\*  
TEXKIT60-2 / 2S\*  
\* 2S is with side support



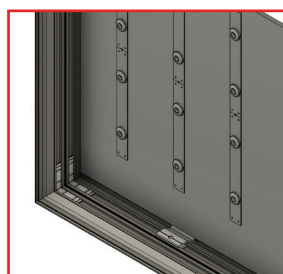
**SUSPENSION**  
TEXHANG2 with cable or  
TEXMOUNT2 with M6 rod for very  
large frames



**SUPPORT**  
Connect H profile with TEXCORNH  
(on each side)  
Use tapping screw in TEXLED  
profile



**LIGHTING EDGELIT**  
Use Edgelit modules  
(eg. Lucoled EL31)



**LIGHTING BACKLIT  
(TEXLED80+80T)**  
Use Backlit modules  
(eg. Lucoled BL160, BL140, PL30  
or PR40)

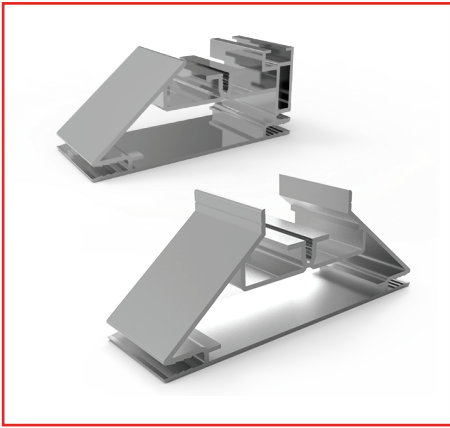


**LIGHTING BACKLIT  
(TEXLED100+100T)**  
Use Backlit modules  
(eg. Lucoled BL30)

### SUSPENSION SYSTEMS

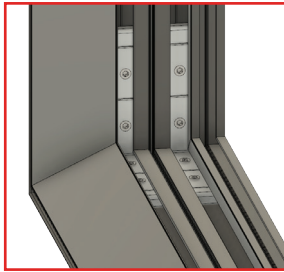
Check our website or Architectural brochure for more information about our range of suspension kits and systems.

[www.cosign.be](http://www.cosign.be)

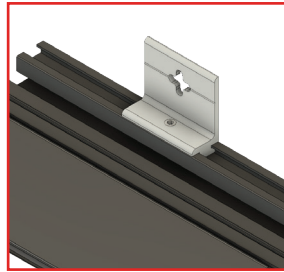


## TEXLEDSS/DS-BL

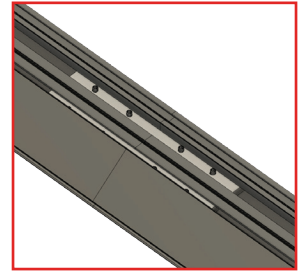
Single and Double Sided Textile LED Frame  
102mm/127mm



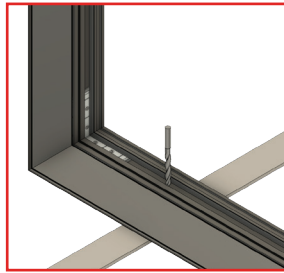
**CORNERS**  
Connect with TEXLEDCORN1 (use on each side)



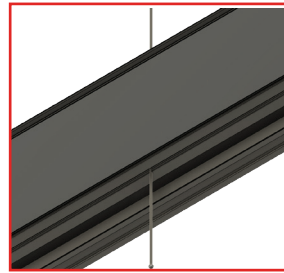
**WALL MOUNTING**  
Use TEXBRACKET1 and fix with any screw to the wall (only TEXLEDSS-BL)



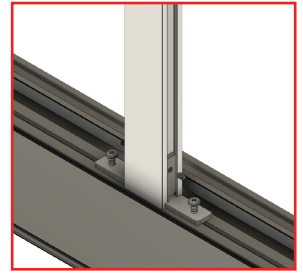
**EXTEND**  
Connect with CONNECTOR3 (use on each side)



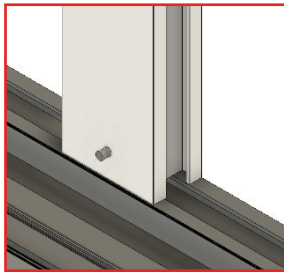
**STANDING KIT**  
Drill holes and fix feet (eg. TEX-FOOT60) with screws (only TEXLEDDS-BL)



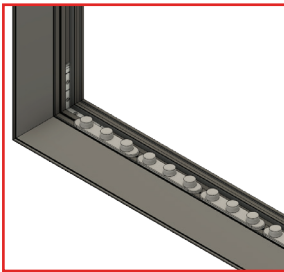
**SUSPENSION**  
Drill hole and use suspension cable with ball. Use rod for large lightboxes (only TEXLEDDS-BL)



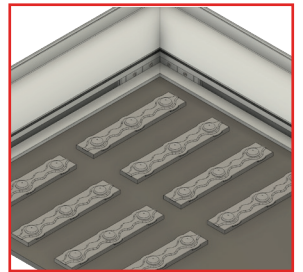
**SUPPORT**  
Connect H profile with TEXCORNH (on each side) Use tapping screw in TEXLED profile



**SUPPORT**  
Connect H profile with TEXCLAMP, use hole and screw to tighten



**LIGHTING EDGELIT**  
Use Edgelit modules (eg. Lucoled EL36)

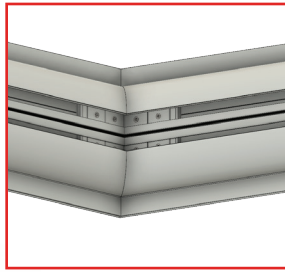
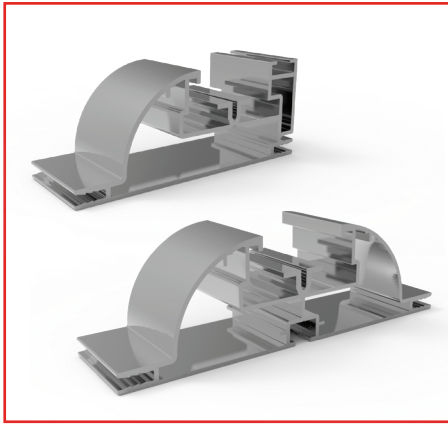


**LIGHTING BACKLIT**  
Use Backlit modules (eg. Lucoled BL30) Only for TEXLEDSS-BL

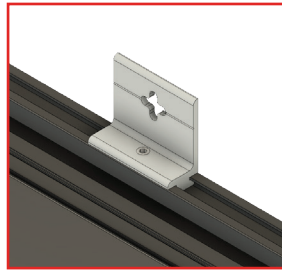
### LED MODULE ESTIMATOR

Use the Lucoled LED Module Estimator to choose for the correct light modules and placement for your lightbox, both backlit and edgelit versions.

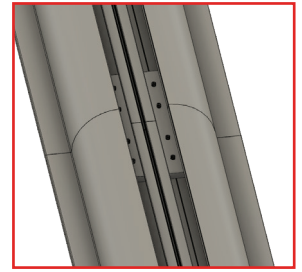
[www.lucoled.com](http://www.lucoled.com)



**CORNERS**  
Connect with **TEXLEDCORN1** (use on each side)



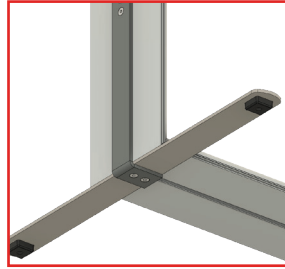
**WALL MOUNTING**  
Use **TEXBRACKET1** and fix with any screw to the wall (only **TEXLEDSS-BL**)



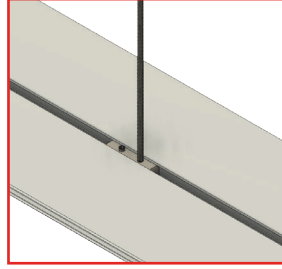
**EXTEND**  
Connect with **CONNECTOR3** (use on each side)

## TEXLEDSS/DS-EL

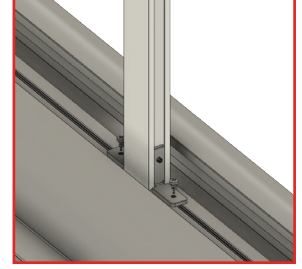
Single and Double Sided Textile LED Frame  
120mm/160mm



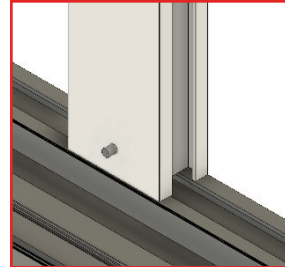
**STANDING KIT**  
**TEXKIT40-2 / 2S\***  
**TEXKIT60-2 / 2S\***  
\* 2S is with side support



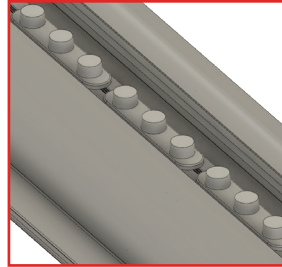
**SUSPENSION**  
**TEXMOUNT2** with M6 rod (only **TEXLEDDS-EL**)



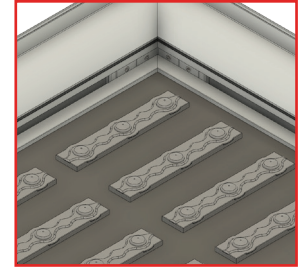
**SUPPORT**  
Connect H profile with **TEXCORNH** (on each side)  
Use tapping screw in **TEXLED** profile



**SUPPORT**  
Connect H profile with **TEXCLAMP**, use hole and screw to tighten



**LIGHTING EDGELIT**  
Use **Edgelit** modules (eg. **Lucoled EL36**)



**LIGHTING BACKLIT**  
Use **Backlit** modules (eg. **Lucoled BL30**)  
Only for **TEXLEDSS-BL**

### SUSPENSION SYSTEMS

Check our website or Architectural brochure for more information about our range of suspension kits and systems.

[www.cosign.be](http://www.cosign.be)











# COSIGN

TEXTILE FRAMES



**ARCHITECTURAL SIGNAGE | TEXTILE FRAMES | POS PRODUCTS | LED SOLUTIONS**

Cosign is a designer, manufacturer and distributor of architectural signage & way finding solutions, poster frames & displays, led modules and sign making tools. Based in Belgium with regional offices in Mexico and India, and through our global partner network, our sign solutions are available in more than 80 countries.

Cosign est un concepteur, fabricant et distributeur de solutions de signalétique & orientation architecturale, de cadres & supports de posters, de modules LED et d'outils de signalétique. Nous sommes basés en Belgique et possédons des antennes régionales au Mexique et en Inde. Grâce à notre réseau mondial de partenaires, nos solutions d'affichage sont disponibles dans plus de 80 pays.

## COSIGN

YOUR DEALER / VOTRE REVENDEUR:

COSIGN nv  
Industriepark 32 B  
B-3290 Diest  
Belgium  
[www.cosign.be](http://www.cosign.be)

